

JONATHAN ADLER

MODERN AMERICAN GLAMOUR

FALL 2024

FLAIR
FOR
EVERY
LAIR

200+ NEW &
IN-STOCK STYLES



Modern American Glamour. What does it mean to me?

Modern: I want my designs to always feel fresh, new, and totally today (with a nod to the past and a glimpse into the future).

American: my sensibility is moored in the innate optimism of America, the land of possibility.

Glamour: memorable, confident, sparkling, glamour is swagger.

MODERN AMERICAN GLAMOUR



(L TO R): CHANNLED GOLDFINGER DINING CHAIR | SORRENTO BAR | SCALINATELLA COCKTAIL TABLE
REFORM CREDENZA | RIDER ARM CHAIR | MAXIME DINING CHAIR

THE VIBE IS...

WEST VILLAGE TOWNHOUSE

Downtown cool meets uptown glow.



GET *the* LOOK

1. GROOVY OBJETS

Kill the clutter with a curated selection of perfect bits and bobs.



2. GOBS OF GOLD

We make mushrooms monumental with hand-embroidered gold beads.



3. MIXMASTER

Create improbable couples, like our strong and silent oak Brussels table with our superstar Rings mirror in brass and mother of pearl.



EXTRA CREDIT

Daily lunch ressie at Cafe Cluny for you and your pooch.

- 1. RINGS MIRROR | 2. RONDO DINING CHAIR
- 3. BRUSSELS DINING TABLE | 4. BASKETWEAVE TALL BOTTLE VASE | 5. MARNIE LOUNGE CHAIR | 6. BRASS RIPPLE ACCENT TABLE | 7. REFORM PEBBLE COCKTAIL TABLE
- 8. BASKETWEAVE ROUND VASE | 9. GENEVA BOWL | 10. MILANO KINETIC CHANDELIER | 11. CLARIDGE SOFA, BELFAST STONE LINEN | 12. CARACAS TRIPOD FLOOR LAMP | 13. MUSHROOMS PILLOWS | 14. DELPHINE TALL SIDE TABLE | 15. GLOBO MARBLE TABLE LAMP | 16. BASKETWEAVE PEDESTAL BOWL | 17. SUNBURST HAND-KNOTTED RUG, GREY

EDEN POTTERY

Our signature serpents on punchy pop tones. Gold accents add a bite of glam.



COBALT ANIMALS

Stoneware sculptures finished in our sizzling new satin matte cobalt glaze.



BASKETWEAVE POTTERY

Porcelain vessels glazed in fresh light blue and wrapped in classic Palm Beach caning in glimmering gold.



LES AMIS VASES

Stoneware featuring expressive faces crafted with melted ground glass.



CHARADE VASES

Dotted with hand-carved studs cast in the highest quality matte porcelain.



NEW HANDCRAFTED POTTERY

Rough, smooth, glossy or mottled, each piece of our pottery starts its journey in our Soho studio. Read more about our dedication to craft on page 38.



XL & XXL PARADOX VASES

Two oversized additions to our bestselling collection. Organic modern functional sculptures in pure white porcelain.

MEET THE NEW MODERN CLASSICS

GAINSBOURG LOUNGE CHAIR

Shown in Varese Cognac velvet



PIERRE LOUNGE CHAIR

A swooping silhouette cradles a perfectly pitched seat with a nifty tucked detail on the back. Added bonus: a built-in wood coaster on the flared arm. This might be the perfect chair.



APHRODITE VASE



RIVIERA CAPITAL PEDESTAL

RIVIERA LOUNGE CHAIR



ST. TROPEZ LOUNGE CHAIR

Crafted from natural reeds and blue velvet cushions, our new St. Tropez Lounge Chair feels coastal and cool in the city, or haute couture in the country.



ALPHAVILLE TUFFET

Minimalist and modern, a simple dot to punctuate your place: A honed brass base topped with an upholstered top. A comfy and surprising seating solution available in your choice of electric Cirrus Cobalt or bright Olympus Ivory bouclé.



THE EDIT LOUNGE CHAIRS

Touch-me textures, eye-catching colors, and no bad angles.
Did we mention ultra-comfy? You'll never want to get up.

Shop our full selection online and in stores.



ST. TROPEZ LOUNGE CHAIR

Natural reeds decked with blue velvet-clad cushions.



NEW **POMPIDOU LOUNGE CHAIR**

Our biggest, boldest cocoon yet.



NEW **SATURN LOUNGE CHAIR**

A deep blue disc cradled by a shiny nickel base.



NEW **GAINSBOURG LOUNGE CHAIR**

Shown in Stratus Sage bouclé. Cerused ash wood and blackened metal legs.



MARAIS LOUNGE CHAIR

Available with inverse color assignment. A classic capsule silhouette with a sculptural split.



BELMONDO LOUNGE CHAIR

Tufted olive green leather accented with textural oatmeal linen. As handsome as its namesake.



STOCKHOLM SWIVEL CHAIR

A sleek and tailored silhouette that feels like a cloud.



DRAPER CLUB CHAIR

With a biscuit tufted back and an inviting T-cushion seat.



SERPENTINE SWIVEL CHAIR

Minimalist and modern but enveloping and inviting. Gorgeous from every angle.



RIDER ACCENT CHAIR

Acrylic finials, brass detailing, and Greek-key inspired arms. Serving 1940s glamour.



ETHER SWIVEL CHAIR

Shown in Bergamo Snow velvet. Swivel, rock (yes, it is a rocker and a swivel chair!), and sink into cozy.



CHANNELED GOLDFINGER LOUNGE CHAIR

Shown in Duquette Pear velvet. Leaned-back luxury on a pared down frame.



GLOBO CONVEX MIRRORS

We're biased: we love everything on the bias. Diagonal prints, diagonal mirrors, diagonal anything activates a space.

NEW

BEAUMONT LOUNGE CHAIR

An architectural yet airy base juxtaposed with a soft, sculptural silhouette. Shown in our new family-friendly Diagonal Natural bouclé.

TO DINE FOR

ENTERTAINING SEASON IS HERE



1. OP ART BAR CART | 2. ROCKET DECANTERS | 3. ACRYLIC TUSK OBJET | 4. OP ART MIRROR | 5. MEURICE RECTANGLE CHANDELIER | 6. CHANNLED GOLDFINGER DINING CHAIR | 7. JACQUES DINING TABLE | 8. VALLAURIS FLYING BIRD BOWL | 9. REFORM FLATWEAVE RUG | 10. TALITHA CREDENZA | 11. PUZZLE TABLE LAMP | 12. EDEN VASES | 13. SLIM AARONS "LA CONCHA BEACH CLUB" PHOTOGRAPH



NEW

COLISEUM DINING TABLE

Organic, hardworking, surprising. A thick cork top perched on an ebonized and wire-brushed oak base. Seats up to eight.

DINING TABLES & CHAIRS

Sculptural standouts on their own, our dining chairs are also fabulous flanking a console, and pair perfectly with our dining tables and desks.

RIVE GAUCHE DINING CHAIR

Perch in Parisian style. A wire-brushed and limed wood frame upholstered in a collage of oatmeal linen and olive leather. Family-friendly, timeless chic, endlessly versatile.



ALPHAVILLE CAPSULE DINING TABLE

Two honed brass pedestals support a capsule-shaped Carrara marble top. Minimalist and modern. Seats up to ten.



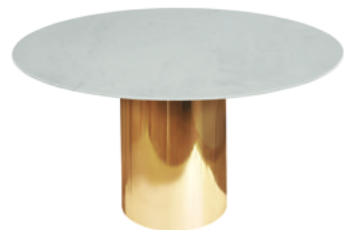
BOND DINING TABLE

Honey-hued, pieced mappa wood on a polished nickel base with brass campaign corners. Seats up to ten with 20" leaf.



JACQUES DINING TABLE

Clear acrylic frame with brass corners supporting a glass top. Seats up to six. For smaller spaces, our Jacques Game Table seats up to four.



ALPHAVILLE DINING TABLE

With a circular white Carrara marble top. The ideal complement to leggy dining chairs. Seats up to six.



TROCADERO DINING TABLE

Splayed ebonized wood legs and solid brass spheres support your choice of two tabletops. Seats up to eight.



BRUSSELS DINING TABLE

With a radial patterned solid oak top and a bamboo-inspired brass-banded base that splits to accommodate a two-leaf expansion. Seats up to ten.



1. RONDO DINING CHAIR | 2. MAXIME DINING CHAIR, RIALTO CHARCOAL VELVET | 3. CAPRICE DINING CHAIR, VARESE LICHEN VELVET | 4. RIPPLE DINING CHAIR | 5. RIDER DINING CHAIR, RIALTO PEACOCK VELVET | 6. CHANNELED GOLDFINGER DINING CHAIR | 7. MAXIME DINING CHAIR, BELGIUM STONE LINEN



**NOTES ON:
LE DINNERWARE**

Here's Le thing: learning French is easier than you think. All you have to do is add a simple "Le" and, voila, you speak Le French like Le native. Inspired by Le classic bistro style, our new dinnerware, linens, and glasses are perfect for Le everyday use or onboard Le yacht. Le wit, Le style, Le chic!

GO AHEAD, DISH!

Everything is best served with a dash of personality.

Shop our full selection online and in stores.



LUCKY NUMBERS MUGS

Oversize stunners in poppy colors with groovy handles. Guaranteed to bring joy to your kitchen shelves. Numbers 0 through 9 available. Sold individually for easy personalization.

DEALER'S CHOICE CANAPÉ PLATE SET

Perfect for parties, desserts, or diminutive snacks. Set of four packaged to gift and store.



JET SET GLASSWARE SET

A toast to the getaways we dream about the most. Hand-blown by skilled artisans.



IT'S ALWAYS COCKTAIL O'CLOCK

Everything you need to give your guests a cocktail hour to remember.

1. SNAKE COCKTAIL NAPKINS
2. VICE WHISKEY DECANTER
3. BERLIN ICE BUCKET
4. BARBELL BARWARE SET
5. BASKETWEAVE GLASSWARE SET
6. ALPHAVILLE PEDESTAL
7. LUCIANA VASE
8. GLOBO CONVEX MIRROR, BRASS
9. ROCKET GIN DECANTER
10. BLITZED GLASSWARE SET
11. VICE ROCKS ICE BUCKET
12. NIXON CENTERPIECE BOWL



NEW
ROCKET ABSINTHE DECANTER
Space Age porcelain decanters labeled with Soviet-inspired typography in timeless black, white, and gold.



SERVING TRAYS
Groovy graphics rendered in super luxe hand-polished lacquer. Anything but lackluster.



NEW **DEEP THOUGHTS COCKTAIL NAPKINS**
Profound 70s era bumper sticker sentiments embroidered on luxe linen.



NEW **RENAISSANCE COASTERS**
Ultra-modern expressions of a classic Renaissance era portrait.



NEW
CHAMBEIGE BAR CART

Featuring back painted glass shelves set in gleaming polished brass framework. A mobile libation station turns any corner into the swankiest spot in your abode.



THE EDIT SOFAS

In-stock, ready to ship favorites arrive at your door in as little as two weeks, or create your own daydream destination with our range of customizable collections.

Shop our full selection of sofas, including sectionals and petite seats, online and in stores.



SUNSET SOFA

Shown in Venice Cognac velvet



MALIBU SOFA

Shown in Cirrus Powder bouclé



ETHER CURVED SOFA

Shown in Cirrus Sky bouclé



BRIGITTE SOFA

Shown in Olympus Oatmeal bouclé



GREENWICH SOFA

Shown in Vincenza Sage velvet



PARKER CURVED SOFA

Shown in Brussels Malachite velvet



CLARIDGE SOFA

Shown in Oxford Navy leather



POMPIDOU MODULAR THREE-PIECE SECTIONAL

Shown in Olympus Oatmeal bouclé



LAMPERT SOFA

Shown in Brussels Charcoal velvet



BIG SUR APARTMENT SOFA

Shown in Teddy Natural



BEAUMONT SETTEE

Shown in Varese Lichen velvet



ETHER CLOUD SETTEE

Shown in Rialto Sky velvet

PETITE SEATS

For smaller pads and pied-à-terres.



NEW
PARKER CURVED SOFA
Shown in our new Abstract Natural cut velvet upholstery, featuring raised cut velvet on a textural, striated ground.

NEW
APHRODITE VASE
Straight off a 1940s film set, our cinematic goddess is crafted from porcelain finished with a matte glaze.

NEW

BEADED PILLOWS

Tête-à-tête treats for your sofa. Magnificent creatures hand-beaded in glistening, wild style.



NEW **MUSHROOM PILLOWS**

Shrooms are so back! Mundane mushrooms get the star treatment they deserve in our new hand-beaded gold beauties.



NEW **CABANA SILK PILLOWS**

Sometimes you just need a simple striped pillow. Printed on luxe silk and guaranteed to add a pop of prep to your pillowscape.



NEW **MONTEREY PILLOWS**

Concentric cord embroidery applied to dyed linen. Textural and crafty in a fresh neutral palette featuring olive, blush, and rust tones.

SURRENDER TO COUTURE COZINESS

Supersoft throws and comfy cushions, each woven, beaded, loomed, or embroidered by hand.



EMBELLISHED TROWS

Crafted in an unbelievably soft and luxurious Merino wool and then embellished by hand.

NEW **EDEN MERINO WOOL THROW**



NEW

NIXON BABY ALPACA THROW

A chic and *classique* pattern interpreted by artisans using the finest hand-loomed baby alpaca threads.



THE VIBE IS...

PARIS APARTMENT

La vie riche Bohème.
Curated, airy, chic.



1. STOCKHOLM SWIVEL CHAIR | 2. CHAMBEIGE BAR CART | 3. RIVIERA CAPITAL COCKTAIL TABLE | 4. PARADOX XL VASE | 5. PARADOX XXL VASE | 6. OP ART MIRROR | 7. VIENNA LARGE GLOBE CHANDELIER | 8. LISBON TORCHIERE | 9. JULIET ARM CHAIR | 10. ETHER CLOUD LARGE OTTOMAN | 11. REFORM FLATWEAVE RUG | 12. RINGS MIRROR | 13. BEAUMONT LOUNGE CHAIR, DIAGONAL NATURAL BOUCLÉ | 14. ST. GERMAIN HAND-KNOTTED RUG | 15. KIDNEY OTTOMAN, VARESE LICHEN VELVET | 16. SERPENTINE BED | 17. GLOBO TABLE LAMP, CLEAR | 18. BOND SMALL CABINET | 19. PAULE MARROT, "FLYING BUTTERFLIES" PRINT

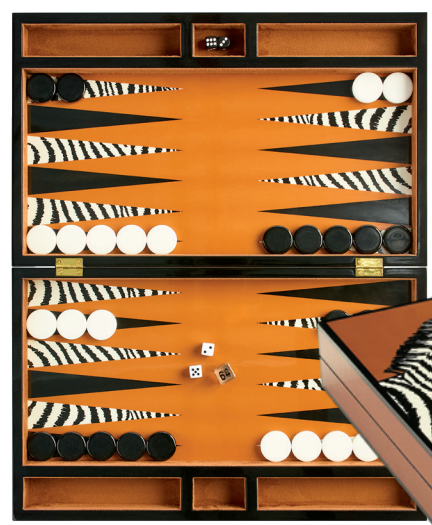


GET *the* LOOK



1. HEAVY METAL

Meet our new brass Reform Art. Made from a ceramic model crafted in our Soho pottery studio, cast in brass, and framed in a floating black oak frame.



2. TOASTY TONES

Paris apartment style is grounded in neutrals: white, black, and shades of camel and mahogany.

3. CONNOISSEURSHIP

Layer with eccentric accents that give Paris flea market vibes.





1. COLISEUM DINING TABLE | 2. GRENÁDE ZIPPER VASE | 3. RIVE GAUCHE DINING CHAIR | 4. ALBERT FLATWEAVE RUG | 5. BOND BAR | 6. GLOBO CONVEX MIRROR IN BRASS
7. RIVIERA DOME TABLE LAMP | 8. CARACAS WAVE CHANDELIER | 9. MONTEREY SHAPES CORDED ART | 10. RIO SINGLE PAN LIGHT | 11. LES AMIS VASES | 12. GIANT BRASS ORB
13. BOND FLATWEAVE RUG | 14. BIG SUR LOUNGE CHAIR | 15. COLISEUM COCKTAIL TABLE | 16. MALIBU SOFA, CIRRUS POWDER BOUCLÉ | 17. WELLINGTON TRIPOD FLOOR LAMP WITH TABLE
18. MONTEREY PILLOWS | 19. NIXON BABY ALPACA THROW, BROWN | 20. BOND CANTILEVERED SIDE TABLE | 21. ALPHAVILLE TABLE LAMP | 22. SLIM AARONS "LEISURE IN ANTIBES" PHOTOGRAPH | 23. CARACAS SIX-LIGHT CHANDELIER

GET *the* LOOK

5. MAJOR MATERIALS
Natural cork with a semi-gloss finish is family-friendly and inviting.

4. ALSO, OLIVE
Always classic black, natural oak and bits of brass, but also olive. A neutral for those in-the-know.



EXTRA CREDIT

Handwritten invitations announcing your monthly salon.



FINISHING TOUCHES FOR THE ARTISTE

You Prada in Marfa, you Basel in Miami, and you swear by The Philosophy of Andy Warhol. Colorful, provocative 'scapes are your brushstroke.



1. SATURN LOUNGE CHAIR | 2. BRASS HAND SCONCE | 3. REFORM BRASS ART | 4. GLOBO CONVEX MIRROR, BRASS | 5. PARADOX SMALL ART | 6. COLISEUM CONSOLE TABLE | 7. MAXIME DINING CHAIR, VARESE PERSIMMON VELVET | 8. BOND FLATWEAVE RUG ON CONSOLE, L TO R: BEL AIR GORGE VASE, CELADON | 9. EMILIO TALL VASE | 10. DRUGGIST EYE OBJET | 11. COBALT BIRD | 12. BRASS ORB

EMILIO LOW VASE

A nod to Milanese modernism, a pop of POP! Glossy porcelain vessels with gold details.



NEW

BEL AIR VASES

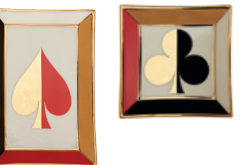
Organic forms suspended within thick clear acrylic cubes. Mix tones and shapes to create a modernist tablescape.



NEW

DEALER'S CHOICE TRAYS

From Diana Vreeland's iconic red room to the storied extravagance of Monte-Carlo, playing card motifs are jet set glamour.



NEW

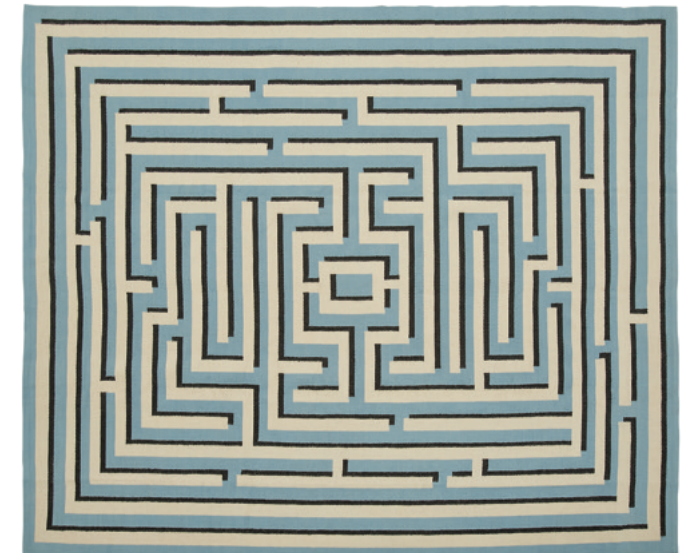
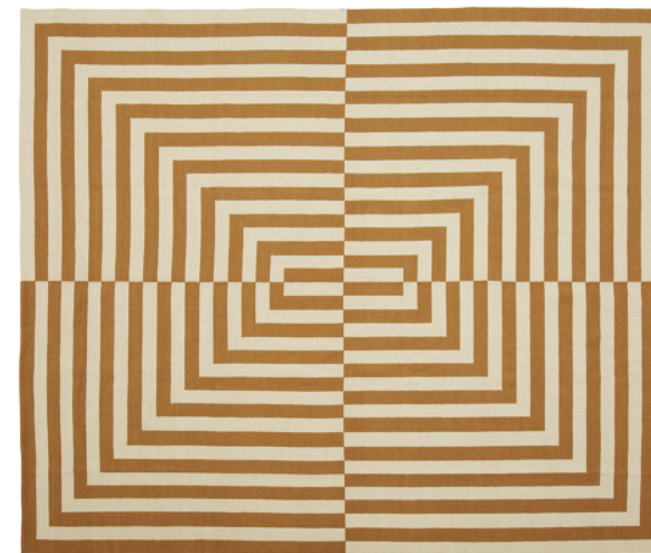
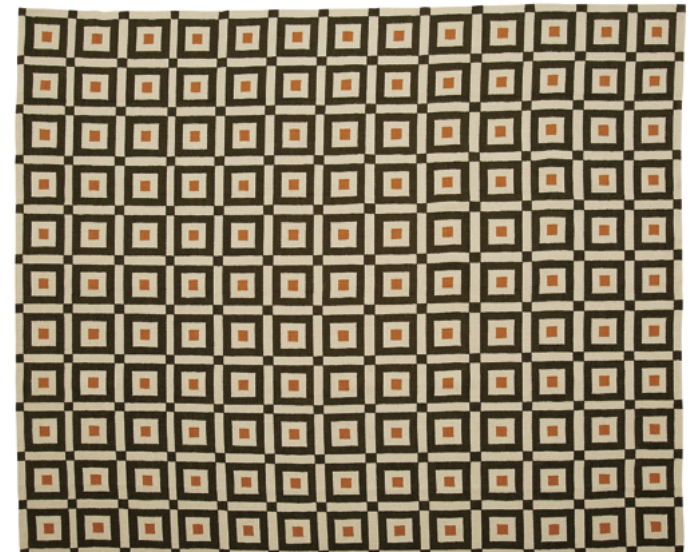
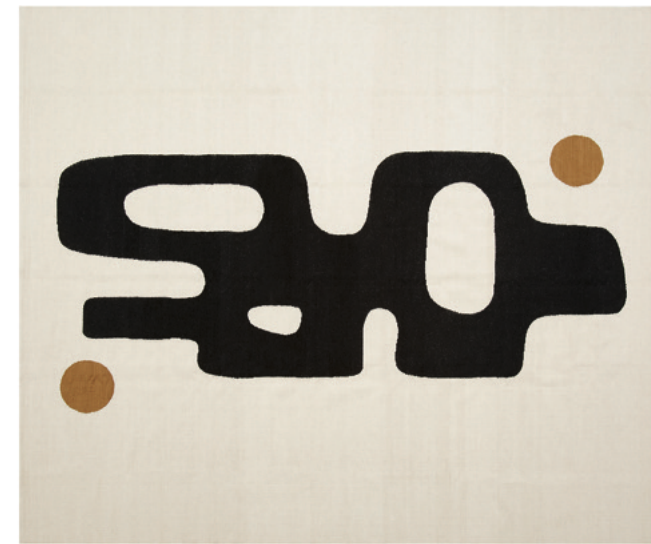
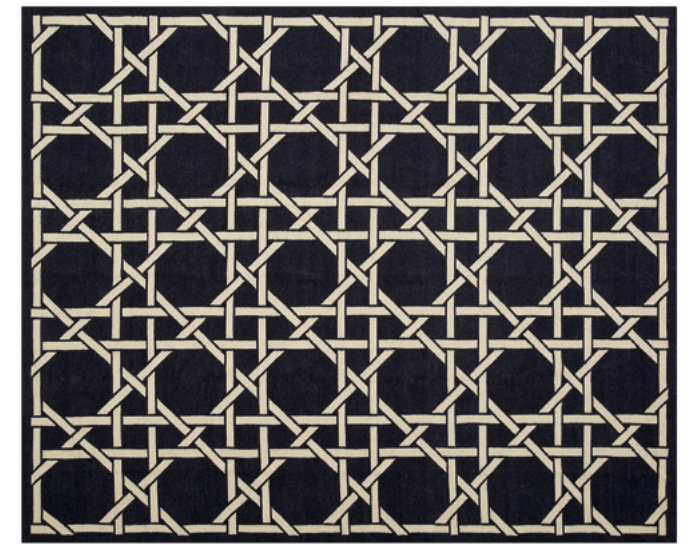
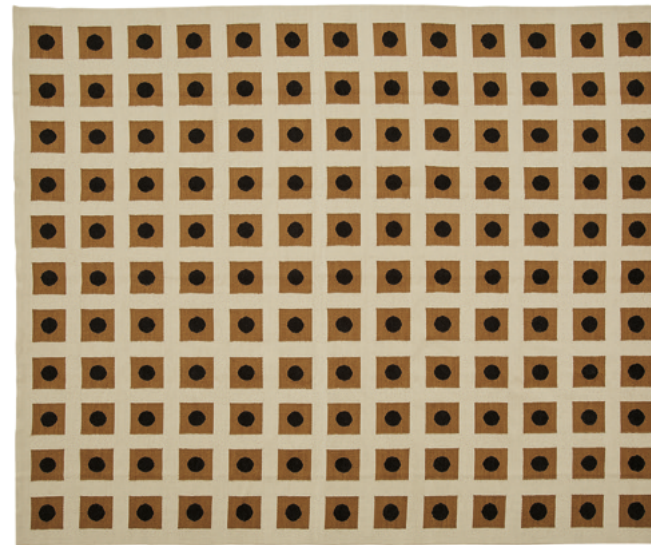
COBALT POTTERY

Every hue has its day and cobalt is definitely *du jour*. We found a partner workshop that has perfected this satin matte glaze: rich, deep, objet-redefining.



FALL FEET FIRST

Fabulous foundations, each expertly loomed, knotted, or tufted by hand for long-lasting looks and superior softness. In-stock in a range of colors and sizes.



NEW PERUVIAN FLATWEAVE RUGS

Made-to-order by artisans in Peru, our reversible flatweave rugs merge our modern designs with their traditional craft.

POMPIDOU

COLLECTION

Our extra deep and sublimely squishy modular seating system is guaranteed to solve all of your problems. Get what you need, from a single seat to a sprawling sectional.

CORNER PIECE

For use as a corner-friendly cocoon, as a sectional joint, or to round things off with an arm rest.

ARMLESS PIECE

For use as a single seat or as an added-in extension cushion or chaise arm.

NEW

OTTOMAN

Extend your sectional, create a chaise, or pop your feet up on a coordinated piece.

1. OSAKA DISC CONCRETE PLANTER | 2. POMPIDOU MODULAR SIX-PIECE SECTIONAL WITH OTTOMAN | 3. TOKLAS PILLOWS | 4. BOND ROUND COCKTAIL TABLE | 5. ACRYLIC AMOEBA OBJET | 6. GRENADE ZIPPER VASE | 7. SLIM AARONS "CATHERINE WILKE" PHOTOGRAPH | 8. RIPPLE ARTICULATING CHANDELIER | 9. ST. GERMAIN HAND-KNOTTED RUG

NOTES ON:

SCALE

Ever get the feeling your room isn't quite working? It might be because everything is too *samey*. Just like the best lighting should come from a mix of sources—ceiling, floor, tabletop, wall—the best rooms are all about remixing scale: an oversized floor lamp here, a massive arm chair there, a rug with a blown up print. Our new Pompidou Lounge Chair is a panacea for your pad.

NEW

POMPIDOU LOUNGE CHAIR

Upholstered in our new creamy camel Valais Latte bouclé for an extra cozy hug.

2.

1.

3.

NEW

REFORM FLATWEAVE RUG

Featuring our signature Reform pattern. Made-to-order by artisans in Peru.

- 1. BOND CUBE ACCENT TABLE
- 2. GRENADE ZIPPER VASE
- 3. POMPIDOU FLOOR LAMP

TOTALLY TUBULAR

A TASTE OF HONEY

Yes we love color, but sometimes a taste of honey is just what the doctor ordered. Bask in the warm glow...

1. REFORM CREDENZA | 2. GETTY IMAGES "SUNNY DAY" PHOTOGRAPH | 3. LISBON SCONCE | 4. MARAIS LOUNGE CHAIR, OLYMPUS IVORY BOUCLÉ | 5. PALM SPRINGS DOTS BOWL | 6. BRUSSELS PEDESTAL | 7. SCALINATELLA COCKTAIL TABLE | 8. ACRYLIC HAND OBJET | 9. POMPIDOU MODULAR THREE-PIECE SECTIONAL | 10. MONTEREY PILLOWS, NEUTRAL | 11. PAULE MARROT, "BLACK AND WHITE ABSTRACT 4" PRINT | 12. KIDNEY OTTOMAN, SHEARLING | 13. GLOBO DEMILUNE PENDANT | 14. CANAAN FLATWEAVE RUG, CAMEL AND NATURAL

MUSE

COLLECTION

Surreal, provocative, iconic. Our bestselling porcelain collection always gets second glances.



NOTES ON:

CRAFT

First and foremost, Jonathan is a potter and, to this day, Jonathan Adler remains a craft-based design practice. Everything we make starts its journey in our Soho pottery studio, the heart and soul of the company, which is folded right into our creative headquarters. It's where Jonathan and his team handcraft the prototypes for every porcelain, stoneware, acrylic or brass Jonathan Adler piece that you bring into your home.



NEW
GLOBO MARBLE TABLE LAMP

We've reimagined our iconic Globo lamp in new materials. A constellation of marble and brass spheres float on a brass stem topped with a brass dome. Functional sculpture.



DRUGGIST SQUARE VASE

Dreamy third-eye mindscapes rendered in Delft-inspired blues. Sparkly gold accents add a dose of glam.



ACRYLIC RABBIT OBJET

Cast in solid acrylic from a model sculpted in our Soho pottery studio, this luminous rabbit is large and in charge.



NEW
OP ART BAR CART

What's more toast-worthy than mind-bending modernism? Back painted glass panes set in a brass framework.



NEW
GENEVA POTTERY

Let's be Crystal Carrington clear: our new Geneva porcelain is an homage to 80s glamour. Oversized ropes of porcelain accented with gold.

FINISHING TOUCHES FOR THE SURREALISTE

What's black, white, and trippy from top to bottom? Your abode, natch. A soupçon of the surreal can be a portal to the sublime.



1. GLOBO CONVEX MIRROR, BRASS | 2. CHARADE POTTERY | 3. BELVEDERE SCONCE | 4. MUSHROOM OBJETS | 5. CHANNLED GOLDFINGER LOUNGE CHAIR, DUQUETTE PEAR VELVET | 6. ALPHAVILLE PEDESTAL

GLOBO

COLLECTION

Float into our world of dreamy orbs and cabochons in clear or luminous jewel-toned acrylic paired with polished metal and marble accents. High-voltage glamour.



1. SIX-LIGHT LINEAR CHANDELIER | 2. SCNCE | 3. CONSOLE, BLUE | 4. TABLE LAMP, MULTI | 5. SIDE TABLE | 6. MEDIUM BOX | 7. CABINET | 8. BOOKENDS, PINK | 9. CONSOLE, PINK | 10. FRETWORK SCNCE | 11. CONVEX MIRROR, NICKEL | 12. DEMILUNE PENDANT | 13. VANITY LAMP | 14. FOUR-DRAWER CHEST | 15. TABLE LAMP, CLEAR | 16. FRETWORK CONSOLE | 17. FIVE-LIGHT CHANDELIER, MULTI | 18. CONVEX MIRROR, BRASS | 19. PYRAMID TABLE LAMP | 20. SCNCE | 21. FLOOR LAMP



BRIGHT NEW THINGS

From soft ambience to scene-stealing sparkle, we know the way to glow. sconces, flush mounts, table lamps, floor lamps, chandeliers—give every room its own mood.



CHANDELIERS



FLOOR LAMPS



TABLE LAMPS

- 1. GLOBO DEMILUNE PENDANT
- 2. SPUTNIK CHANDELIER, NICKEL
- 3. MILANO KINETIC CHANDELIER
- 4. MEURICE CHANDELIER, BRASS
- 5. RIPPLE ARTICULATING CHANDELIER
- 6. GLOBO MARBLE TABLE LAMP
- 7. ALPHAVILLE TABLE LAMP
- 8. GEORGIA ORB TABLE LAMP
- 9. RONCHAMP TABLE LAMP
- 10. TOTEM TABLE LAMP
- 11. MAXIME TASK FLOOR LAMP
- 12. PARADISO TABLE FLOOR LAMP
- 13. POMPIDOU FLOOR LAMP
- 14. CARACAS CACTUS FLOOR LAMP
- 15. HOLLYWOOD FLOOR LAMP, BRASS

FORGET GREIGE, EMBRACE CHAMBEIGE

A new goes-with-everything palette that's anything but neutral. Chambeige is the new black.



1. POMPIDOU MODULAR THREE-PIECE SECTIONAL | 2. MILANO CHAMPAGNE PILLOWS
3. ALPHAVILLE TUFFET, OLYMPUS IVORY BOUCLÉ | 4. BEAUMONT LOUNGE CHAIR,
DIAGONAL NATURAL BOUCLÉ | 5. EYES BEADED ART | 6. DORA MAAR PLANTER | 7. BRASS
RIPPLE ACCENT TABLE | 8. MADRID HAND-KNOTTED RUG | 9. CHAMBEIGE EYE TRAY
10. OCULUS GLASSWARE SET | 11. DORA MAAR VASE | 12. EVE ACCENT BOWL

SERPENTINE CHAISE

Pitched to match its curves to yours. Chic in a cozy corner, or double up and flank your fireplace.



CHAMBEIGE MIRROR

NOTES ON: CHAMBEIGE

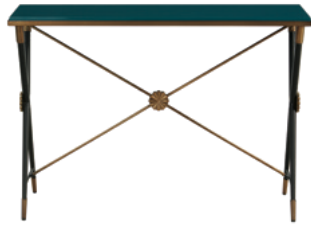
A touch of blush, a bit of bronze, strokes of chocolate and ivory—Chambeige, our catchall word for this intoxicating palette, will transport you to a world of louche glamour. Think Halston, think Studio 54, think Egon von Fürstenberg. Totally 70s, totally today.

THE EDIT

CONSOLES & CREDENZAS

Keep it chic and tidy with couture storage that hits all the right notes whether in the hall, behind the sofa, or duetting with your dining table.

Shop our full selection online and in stores.



RIDER CONSOLE

A light and airy nod to Empire style. A teal lacquer top and blackened steel frame with antique brass accents.



GLOBO CONSOLE

Glossy white lacquer, sinuous brass framework, and solid acrylic cabochons.



JACQUES CONSOLE

Luxe clear acrylic with brushed brass accents with a glass top and shelf.



TALITHA WATERFALL CONSOLE

A lustrous hand-stamped nickel pattern applied to a minimalist form.



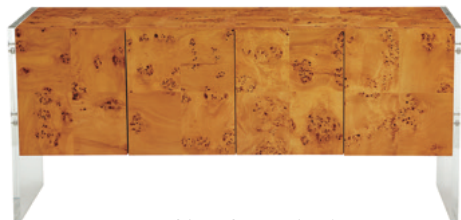
RIVIERA WATERFALL CONSOLE

Natural reeds in a Chinese-inspired silhouette. Comfy in a coastal-inspired manse or a Park Ave penthouse.



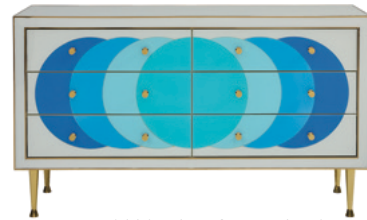
CUBIST CONSOLE

A stacked cube base finished with ivory lacquered raffia. Elegantly elemental.



BOND CREDENZA

Pieced mappa wood floats between acrylic legs with stainless steel accents.



ULTRAMARINE CREDENZA

Ivory and tonal blues in back painted glass with polished brass edging.



TALITHA CREDENZA

A total stud of a credenza, crafted from hand-stamped nickel with a gloss navy interior. Two adjustable shelves.



OP ART CREDENZA

Charcoal and ivory back painted glass with polished brass edging.



WELLINGTON CREDENZA

Burnt orange doors with iron accents and wrapped reed edges. Very St. Tropez, very equestrian, very you!



REFORM CREDENZA

An ebonized and wire-brushed oak cabinet perched on brass legs. Featuring our signature Reform pattern crafted from hand-hammered brass.



CHAMBEIGE CREDENZA

UNLEASH YOUR INNER CURATOR



NOTES ON: BEADED ART

Our beaded art works are like French couture fashion for your walls. We design the motifs in our Soho studio and then masterful artisans in India bring them to life with mind-bending skill and panache. Each piece takes nearly 100 hours to complete and is framed in a chic shadow box. Marrying craft with glamour is always our mission. Get lost in the exquisite details and soulful craftsmanship.

1. ZEBRA BEADED ART | 2. MACAW BEADED ART | 3. PARAKEET BEADED ART | 4. PARROTS BEADED ART | 5. FLAMINGO BEADED ART | 6. PEACOCK BEADED ART | 7. LEOPARD BEADED ART

Three new collections. Each piece floats in an ebonized and wire-brushed oak or mahogany shadow box frame.



NEW
DORA MAAR & GALA ART
Unglazed porcelain. Our iconic Muse pottery reimagined as sculpture for your walls.



NEW
REFORM ART
Polished brass bas-reliefs inspired by our signature Reform pattern.



NEW
PARADOX ART
Inspired by our Paradox vases. Featuring fluid, organic shapes intersected by rough bars of texture. Cast from models we sculpt in our Soho studio.

THE VIBE IS...

PARK AVE PENTHOUSE

Think *tradish* with a twist.

- 1. VERSAILLES CHANDELIER, BLACK | 2. PEACOCK BEADED ART
- 3. BRASS RIPPLE TABLE LAMP | 4. ACRYLIC CYLINDER TABLE, TURQUOISE | 5. MAXIME DAYBED | 6. NIXON BABY ALPACA THROW, NAVY | 7. RIDER CONSOLE | 8. RIDER KLISMOS CHAIR
- 9. 3D GREEK KEY FLATWEAVE RUG | 10. GETTY IMAGES "SUNDIAL HAT" PHOTOGRAPH | 11. ELECTRUM SCNCE | 12. COCTEAU SLIPPER CHAIR | 13. MEURICE TASK FLOOR LAMP | 14. CLARIDGE SOFA, BELFAST STONE LINEN | 15. SCALINATELLA COCKTAIL TABLE
- 16. BASKETWEAVE PILLOWS | 17. RIDER TELEPHONE TABLE | 18. TOTEM TABLE LAMP | 19. SOUTHAMPTON FLATWEAVE RUG



GET *the* LOOK



1. A PREPPY PRINT
Add a jolt of Palm Beach with our new silk twill caning pillows. Punchy yet polished.



2. A MODERN GEM
Give your cocktail table a giant cocktail ring. In three sizes and colors featuring scalloped edges and a brass reveal, our oversized acrylic Fleur boxes are posh jewelry for your home.



3. NEOCLASSICAL NEWNESS
Make it stately with a bit of classicism. Our Versailles Chandelier, inspired by scrolly candlesticks in brass and lacquer with glossy shades, feels grown up but fresh.

EXTRA CREDIT
Put your florist on speed dial.



RIDER COLLECTION

Our modern homage to Empire style, featuring glossy black lacquer, polished metals, and dreamy velvets. Leggy bases, chic sabots, and fabulous finials add more than a dash of drama.



1. CONSOLE | 2. KLISMOS CHAIR | 3. SMALL CABINET | 4. TWO-TIER SIDE TABLE | 5. COUNTER STOOL, RIALTO SKY VELVET | 6. DINING CHAIR, OLYMPUS OATMEAL BOUCLÉ
7. DINING BENCH | 8. ARM CHAIR | 9. DINING CHAIR, RIALTO SKY VELVET | 10. DINING CHAIR, RIALTO PEACOCK VELVET | 11. TELEPHONE TABLE | 12. DINING CHAIR, RIALTO
GOLD VELVET | 13. X-BENCH, RIALTO PEACOCK VELVET | 14. X-BENCH, RIALTO GOLD VELVET | 15. ACCENT CHAIR



LACQUER BOXES

Hand-finished, high-gloss, chicly stackable lacquer boxes. Available in a range of patterns and motifs.



NEW

BRASS BIRD BOX

A pared down bird box cast from solid brass and topped with a sphere of amethyst. Your heirs will thank you.



GIANT AMARYLLIS VASE

Massive stoneware finished with an ultra-shiny platinum luster. A scene-stealing pedestal topper. Limited run of 100.

FINISHING TOUCHES FOR
THE ECLECTICISTE

Feathers fill your pots, eccentricity is expected, and you collect big, bold, shiny moments like a direct descendant of Duquette.



1. DORA MAAR LOW PLANTER | 2. SCALINATELLA COCKTAIL TABLE | 3. BRASS CORAL BOWL | 4. GIANT BELLY VASE | 5. CAMILLE BUST | 6. DELPHINE BAR | 7. EDEN VASES
8. BRASS FLOWER BOUQUET | 9. RIDER KLISMOS CHAIR | 10. SUNBURST HAND-KNOTTED RUG, GOLD

THE VIBE IS...

MIES VAN DER ROHE TOWER

Unimpeachable architecture on the outside, polished modern living on the inside.



NEW

MILANO COCKTAIL TABLE

Featuring five terrazzo tabletops and a sculptural blackened steel base inspired by Oscar Niemeyer's Brasília architecture.

THE EDIT COCKTAIL TABLES

Shop our full selection online and in stores.



REFORM PEBBLE COCKTAIL TABLE

A jewel-like hand-hammered brass clad tabletop on ebonized and limed oak legs.



CIRCUIT MARBLE COCKTAIL TABLE

Luxe Banswara marble with a fresh silhouette. Modern and elemental.



COLISEUM COCKTAIL TABLE

A handsome and heroic table crafted from ebonized and limed wire-brushed oak and polished cork.



SCALINATELLA COCKTAIL TABLE

A sinuous bent brass base topped with white Carrara marble.



OEUF TRAVERTINE COCKTAIL TABLE

Functional sculpture. An egg shaped polished travertine tabletop dances with asymmetrical oak supports.



JACQUES GRAND COCKTAIL TABLE

Large in scale but light and airy. Crafted from luxe clear acrylic with brushed brass accents and a hardworking glass top and lower shelf.



ALPHAVILLE COCKTAIL TABLE

Unimpeachably chic. A simple honed brass drum form with a black glass top.



BOND COCKTAIL TABLE

Timeless. Pieced mappo wood floats atop a simple clear acrylic X-base.



TIC-TAC-TOE SETS

Glossy, glowing acrylic, polished brass and marble—more like tic-tac-whoa!

THE GAMES PEOPLE PLAY

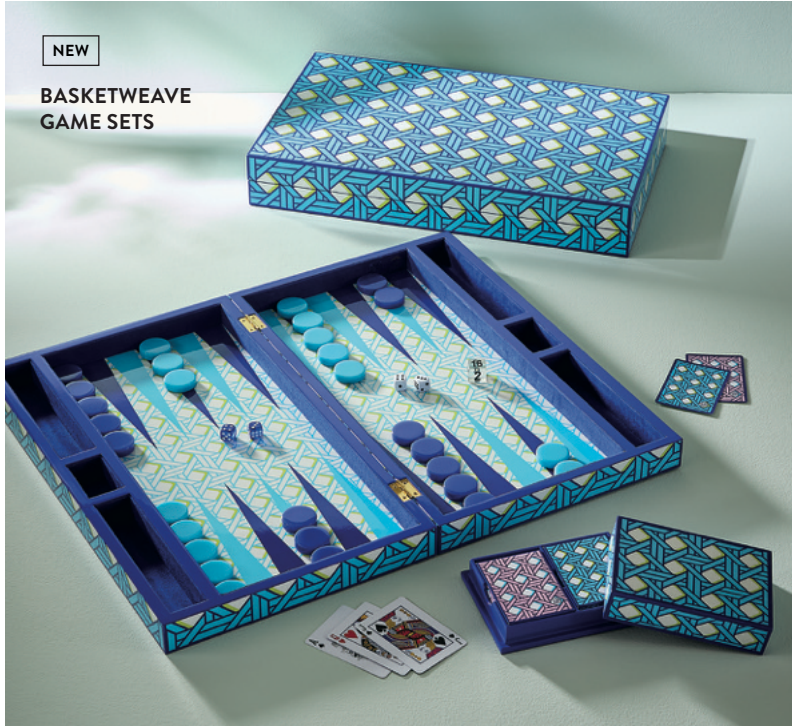
Parlor pastimes and outdoor sports with makeovers so posh you'll never want to put them away.



NEW

PICKLEBALL SETS

Includes two paddles with leather wrapped handles and printed canvas covers to keep your equipment clean and tidy between matches. Two balls included.



NEW

BASKETWEAVE GAME SETS



NEW

ZEBRA GAME SETS

BACKGAMMON SETS Crafted in couture lacquer with nifty interior patterns. After vanquishing your foes, fold it closed for a cool cocktail table accent. Shop our full selection online and in stores.

WHAT GOES WITH EVERYTHING? CLEARLY, JACQUES.

Simplicity meets glamour. Enter our world of luxe clear acrylic, brass accents, and glass tabletops. We have a Jacques solution to all of your decorating problems.



1. BAR CART | 2. CONSOLE | 3. COLUMN TABLE LAMP | 4. ÉTAGÈRE | 5. GAME TABLE | 6. PENDANT LIGHT | 7. BENCH | 8. TWO-TIER SIDE TABLE | 9. ROUND BAR CART | 10. PEDESTAL | 11. ROUND COCKTAIL TABLE | 12. GRAND COCKTAIL TABLE

1. EXECUTIVE DESK | 2. ÉTAGÈRE | 3. CREDENZA | 4. END TABLE | 5. BAR | 6. CUBE ACCENT TABLE | 7. SMALL CABINET | 8. DESK | 9. BUFFET | 10. SIX-DRAWER DRESSER | 11. DINING TABLE | 12. BAR CART | 13. CANTILEVERED SIDE TABLE | 14. ROUND EXTENSION DINING TABLE | 15. COCKTAIL TABLE | 16. OVAL COCKTAIL TABLE | 17. ROUND COCKTAIL TABLE



Architectural rigor, honest materials, timeless style. Our Bond collection is made from natural, honey-hued burl wood, acrylic panels, and stainless accents in a range of hardworking silhouettes.

WHAT WARMS THINGS UP? BOND. TRÈS BOND.



NEW
OEUF
TRAVERTINE
DESK

THE DIARIST'S DEN

You can tuck a stylish workspace into any room. In a range of sizes and styles, our desks work overtime, doubling as consoles, sofa tables, or vanities.



Crafted from luxe travertine perched on asymmetrical oak supports. Barrel leg opens to reveal interior storage.



OEUF TRAVERTINE COCKTAIL TABLE

An abstract sculpture masquerading as a cocktail table.



NEW **GLOBO BOOKENDS**

An L-shaped brass base supporting a luminous globe of smoke acrylic. Inspired by bold cocktail rings. Also available in pink, green, and blue acrylic.



NEW

CANAAN MIRROR

An unexpected palette of brown and white marble blocks with generous brass edging. Super chic in a powder room, foyer or, well, anywhere really...

SUITE RETREAT



CHEVRON BED



RIPPLE BED
Shown in Venice Peacock velvet



CONNERY BED
Shown in Biarritz Cloud linen



SERPENTINE BED



LAMPERT BED



RIVIERA WAVE BED

Handcrafted from reeds in natural tones. Featuring a modern wave shape and recessed base. Feels like you're tucked away in a dreamy bungalow.

BESIDE BEAUTIES

Think beyond the bed when styling your sanctuary. Our side and end tables are the perfect bed fellows. Shop our full selection online and in stores.



RIPPLE BED

Shown in Brussels Powder Blue velvet

END NOTES

Benches are the finishing touches for the foot of the bed: a place to drape your throws, rest your tea tray, and perch in repose.

INNER SANCTUM ESSENTIALS

BAUBLE BOXES

It's time to update your jewelry box with our velvet-lined beauties for your gems.



MAGIC MAKERS

When in doubt, add a mirror—they expand your space and magically add glamour. More please!



SIGNATURE SCENTS

Mood-making fragrances in reusable pots and vessels. Formulated for long-lasting sensory escapes.

NEW

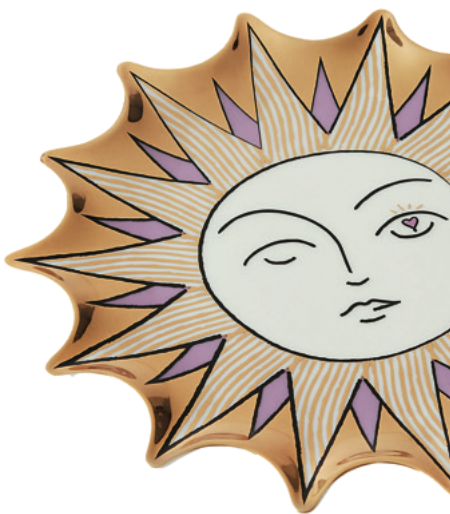
RENAISSANCE RECTANGLE TRAY



NEW

DEEP THOUGHTS COLLECTION

Quippy catchalls featuring profound 70s bumper sticker sentiments rendered in couture porcelain.



MUSE SUN TRINKET TRAY

JONATHAN'S FALL FAVORITES

They're all my faves, so I can't really choose. But, if I must...



Decor can be so safe and samey, ya know? Sometimes it all feels like a beige haze of quiet luxury, but a jolt of cobalt brings life to a room. Saturn is a true keeper.

SATURN LOUNGE CHAIR



I wanted these guys to look like a blue and white illustration of a whimsical vase.

VENEZIA VASES



I need to simplify my life (failing, btw), so I wanted a cocktail table that didn't need styling, that looked sculptural and intriguing sans objets. Voila!

MILANO COCKTAIL TABLE



First of all, brown and white: always. Second of all, I like how loose and organic the Ojai pillow collection feels. Kinda like Ojai itself actually.

OJAI BRANCH PILLOW

I love love love the marbled pattern and bold colors of our Mustique vases. This piece is massive and is currently owning my entryway.

MUSTIQUE SCALLOPED URN



I'm sure I'll get struck down for saying it, but I think I might have outdone Mother Nature herself with our brass flowers bouquet. Seriously, these might be better than actual flowers. Unlike flowers, they age beautifully, developing a rich patina. I hope we don't put florists out of business, but we just might!

BRASS FLOWER BOUQUET



I'm always on the hunt for an uplifting solution that is as good looking as it is hardworking (I mean, who isn't?). Nailed it with the Orbit. Fab on a console uplifting an artwork or plonked in the corner of a room to add intrigue. Chunky icy acrylic and a polished nickel orb? Yes please.

ORBIT SPOTLIGHT

STORES

NEW YORK

Atelier Adler
Soho
382 West Broadway
(212) 645-3105

Upper East Side
135 East 65th Street
(646) 603-6070

CALIFORNIA

Los Angeles
8125 Melrose Avenue
(323) 658-8390

San Francisco
2133 Fillmore Street
(415) 563-9500

FLORIDA

Miami
44 NE 41st St
(305) 576-0200

ILLINOIS

Chicago
676 N. Wabash Avenue
(312) 274-9920

NEW JERSEY

American Dream
1 American Dream Way
(201) 292-5401

TEXAS

Dallas
3700 McKinney Avenue
(214) 484-9726

LONDON, UNITED KINGDOM

91 Pelham Street
London
SW7 2NJ
+44 20-7589-9563

SERVICES



Style now, pay over time.**
Learn more at jonathanadler.com/affirm



Split your purchase into four interest-free payments.***
Learn more at jonathanadler.com/klarna



Chat with our in-store design experts while you shop online.
Learn more at jonathanadler.com/livechat



Explore our shipping and return policies.
Learn more at jonathanadler.com/shipping and jonathanadler.com/returns



Sign up, stay chic. Get first looks, insider inspo, and more sent straight to your phone.
Text JOIN to: 65602



Earn exclusive savings and extras every time you shop or share.
Learn more at jonathanadler.com/insider

**By subscribing to Jonathan Adler text messaging on 65602, you agree to receive recurring autodialed marketing text msgs (e.g. cart reminders) to the mobile number used at opt-in. Consent is not a condition of purchase. Msg frequency may vary. Msg & data rates may apply. Reply HELP for help and STOP to cancel. See Terms and Conditions at jonathanadler.com/pages/terms-of-use & Privacy Policy at jonathanadler.com/pages/privacy-policy.

**Subject to eligibility. Payment options through Affirm are provided by these lending partners: affirm.com/lenders

***CA resident loans made or arranged pursuant to a California Financing Law license.

JONATHAN ADLER



382 West Broadway, New York, NY 10012



@jonathanadler | #MYJASTYLE

See more in stores and online at
jonathanadler.com or call to shop:
(800) 963-0891

www.jonathanadler.com

